



KYDO

Design column speaker 6 x 2"

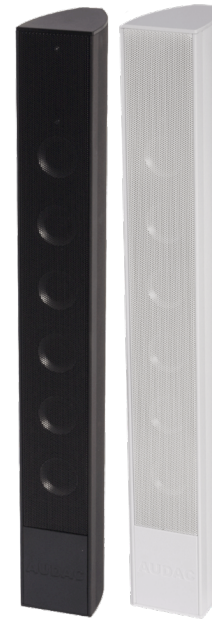
Highlights:

- Multi-funtional wall bracket allowing swiveling and down-tilting
- Slimline aluminum design
- 6 x 2" high-quality broadband speakers
- Multi-tapping 100V line transformer

The KYDO is a design column speaker with an extraordinary sound and surprising high power for use in all applications where audibility of music and speech is most important. It features a speaker section with 6 x 2" drivers, capable of producing a power up to 60 Watt and is equipped with a 100V line transformer with 4 different power taps which are selectable with a recessed adjuster screw behind the front cover. The speaker is also fitted with a 20 Watt transformer. The power taps that can be selected are 20 Watt, 10 Watt, 5 Watt and 2.5 Watt and there is also an internal switch provided for 12 Ohm impedance. The housing is made of aluminum, making it a stylish, light-weight column speaker and the especially designed wall bracket makes it possible to focus the speaker in any direction, to obtain the best possible audibility. Available in black (/B) and white (/W).

Applications:

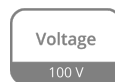
- Houses of worship
- Education
- Corporate spaces
- Public facilities



Impedance:



Voltage:



System specifications:

Speaker type		Broadband column
Max. Power		120 W
RMS Power		60 W
Impedance		12 Ω
Line Transformer Tappings	1	20 W / 500 Ω
	2	10 W / 1000 Ω
	3	5 W / 2000 Ω
	4	2.5 W / 4000 Ω
Sensitivity (1W/1m)		90 dB
Sound Pressure (Max. W/1m)		106 dB
Dispersion	Horizontal	170°
Frequency	Response (\pm 3 dB)	100 Hz - 17 kHz
	Range (-10 dB)	80 Hz - 19 kHz
Dispersion	Vertical	45° off axis
Drivers		6 x 2"

Product Features:

Dimensions		70 x 505 x 105 mm (W x H x D)
Weight		2.500 kg
Operating temperature		-10 °C ~ 50 °C
Construction		Aluminium
Front finish		Aluminium grill
Colours		Black (RAL9005) (KYDO/B)
		White (RAL9010) (KYDO/W)
Accessories	Included	Wall mounting bracket

Variants:

- KYDO/B - Black version
- KYDO/W - White version

Shipping & Ordering:

Packaging	Cardboard box
Shipping weight & volume	3.350 kg - 0.007 Cbm

Architects' and Engineers' Specifications:

The loudspeaker must be a surface-mount column type, consisting of a 6 x 2" full range driver speaker section which is fitted inside a slim and elegant designed enclosure. It shall be fitted with a multi-tapping line transformer allowing the speaker to be used in 100 Volt public address systems or standard low impedance audio systems.

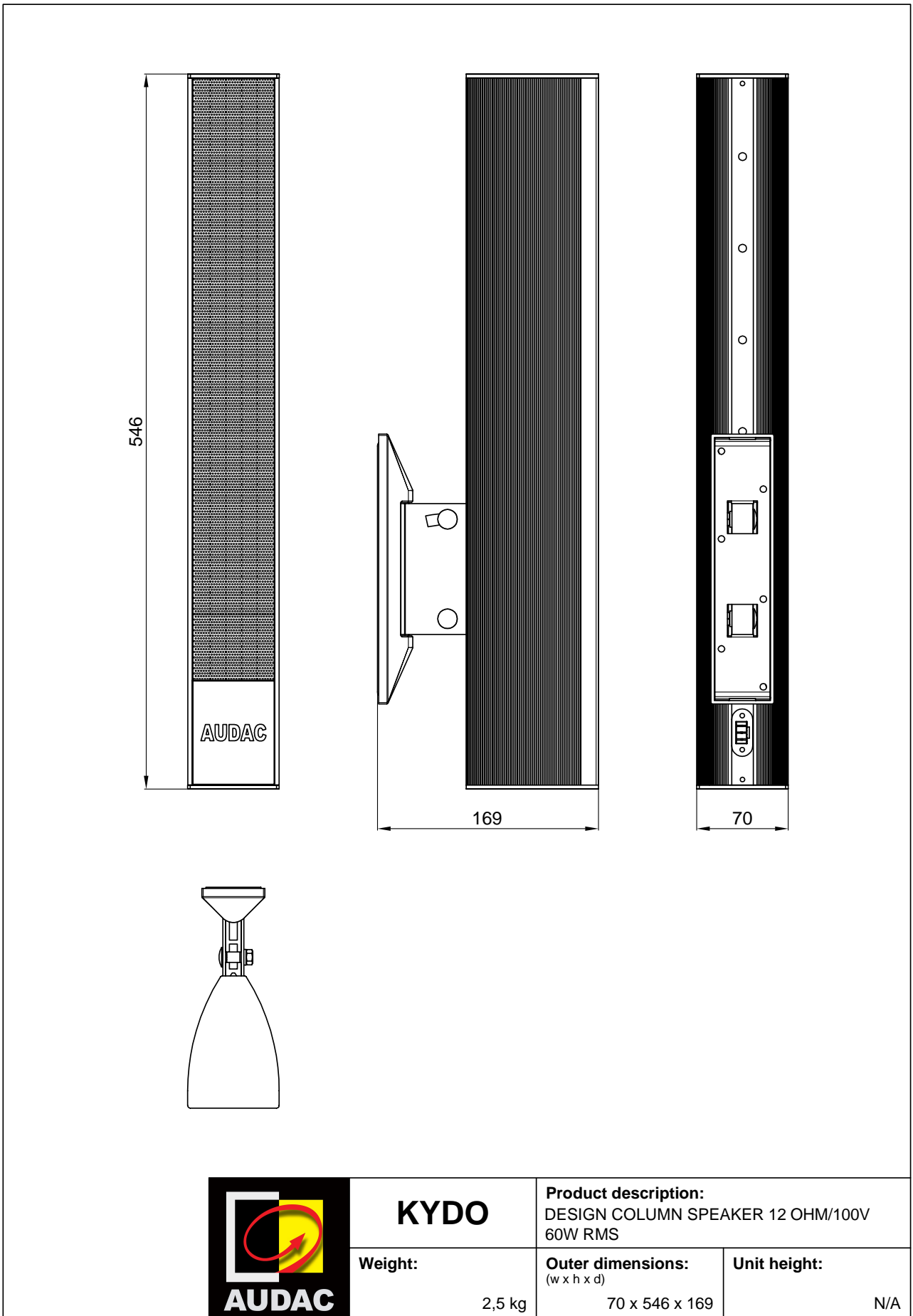
It must have an RMS power handling of 60 Watt with a maximum power handling of 120 Watt and the frequency response (± 3 dB) must range from 100 Hz to 17 kHz. The sensitivity must be 90 dB when measuring with an input signal of 1 Watt at a distance of 1 meter, while the maximum continuous sound pressure level must reach 106 dB. The nominal dispersion shall be a 170° horizontal and 45° off axis vertical coverage pattern at -6dB (average 100 Hz - 10 kHz).

The line transformer power rating shall be selectable using a recessed adjuster screw and include 20 Watt, 10 Watt, 5 Watt and 2.5 watt tapings. An internally hidden switch shall allow switching to a 12 Ohm impedance. Fast and reliable connection of the system shall be possible using a 3-pin terminal block connector.

The speakers enclosure shall be constructed of high-quality aluminum materials with a fine perforated steel grill front finishing which comes available in both white (RAL9010) and black (RAL9005) colours. Optimal directional placement shall be possible through the included multi-functional wall bracket allowing side swiveling over a range of 0° to 80° in both directions and down tilting with an angle

up to 10°.

The speakers' enclosure shall be 546 mm high, 70 mm wide and 169 mm deep (including the mounting bracket) and the weight shall not exceed 2.5 Kg.



KYDO

Product description:
 DESIGN COLUMN SPEAKER 12 OHM/100V
 60W RMS

Weight:

2,5 kg

Outer dimensions:
 (w x h x d)

70 x 546 x 169

Unit height:

N/A