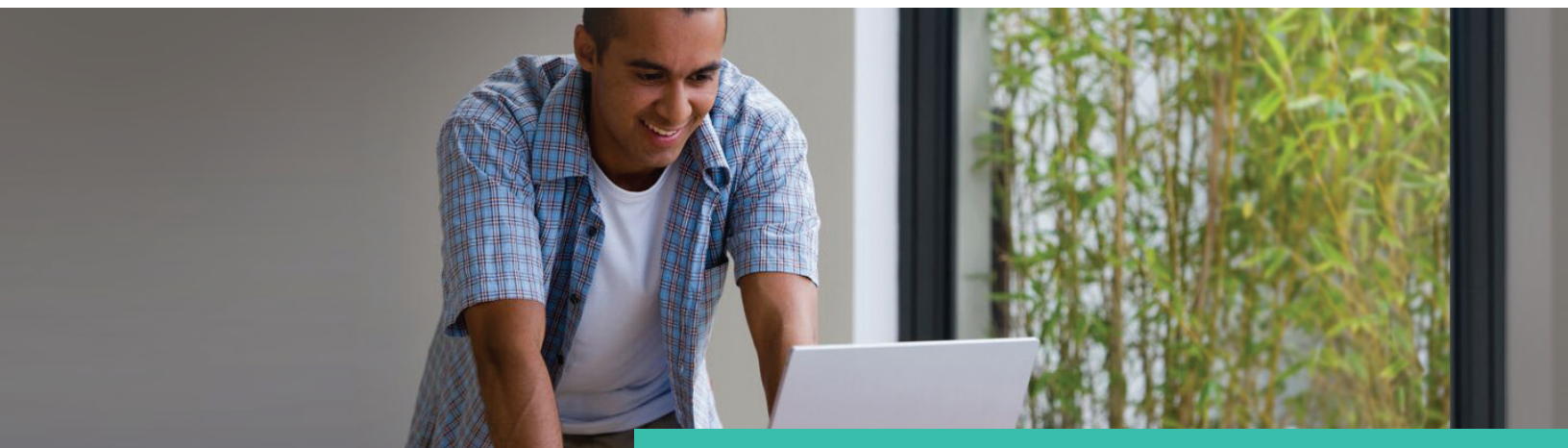


10x optical zoom for the world's most immersive  
Full HD 1080p60 video communications experience

**lifesize**®

**Lifesize® Camera 10x™**



## The Power to Zoom

Lifesize® Camera 10x™ offers the highest quality zoom capability for any size office, conference room, meeting center or auditorium where Full HD quality video must be captured over a distance. To further advance image clarity and flexibility of use, Lifesize Camera 10x delivers immersive image quality in a wide range of light conditions, including low-light environments such as an executive boardroom or a large university lecture hall.

Lifesize Camera 10x is designed to support and enhance HD video communications by providing lifelike video quality through 10x optical zoom, better low-light handling in medium and large spaces and support for Full HD 1080p up to 60 frames per second. Lifesize Camera 10x, bundled with any of the Lifesize® 220™ or Lifesize® Icon™ Series offerings, perfectly captures every gesture and facial expression. It's so detailed and true to life, it's as if you are there.

With smooth, quiet pan/tilt/zoom handling and the anti-glare visor, Lifesize Camera 10x ensures that conference participants and the information being shared remain the focus of the HD video call. Lifesize Camera 10x is the ideal choice for a truly collaborative, true-to-life communication experience.



### LIFESIZE CAMERA 10X

<b>Improved Pan/Tilt/Zoom Functionality</b>	Smoother operational handling for more lifelike interactions
<b>Full HD 1080p60 and 10x Zoom Capability</b>	HD video quality for large meeting rooms
<b>Excellent Low-Light Handling</b>	Better quality video in poorly lit environments
<b>Antiglare Visor and Lens Coating</b>	Reduced light glare on lens to ensure more productive HD video communications
<b>HDMI Video Out Support</b>	Support for cable lengths up to 50 feet (15 meters)

## CAMERA

Resolution: 1920x1080/1280x720  
 Frame Rate: 60 fps @ 1080p/60 fps @ 720p  
 Shutter Speed: 1/30, 1/50 (50Hz), 1/60, 1/100 (50Hz), 1/120 second  
 Format: 16:9  
 Illumination: 150 lux to daylight  
 Exposure: Auto/EV adjustment  
 White Balance: Auto/manual  
 Focus: Auto, passive contrast  
 Focus Range: 30 cm (12") to infinite

## LENS AND IMAGE SENSOR

Lens Construction: 12 element zoom  
 Aperture: F/2.8—F/4.2  
 Distortion: Less than 5%  
 Sensor Type: CMOS  
 Effective Pixels: 2,073,600  
 SNR: 52 dB

## PAN/TILT/ZOOM

Pan Angle: +/- 87.5° (245° total view range)  
 Tilt Angle: +/- 30° (102° total view range)  
 Optical Zoom: 10x  
 Horizontal Field of View: 8° to 70°  
 Aperture Priority: Fixed

## FEATURES

Tripod Mount: Standard 1/4-20 tripod mount  
 Self Check-up: Yes  
 Presets: 10

## INTERFACE

1 x HD Camera Port (1080p/720p)

## CABLES

1 x HDMI (3M/ 9.8 ft)

## POWER SUPPLY

Universal input AC/DC provided  
 100-240VAC 50/60HZ  
 20w typical, 46w maximum

## LENS CAP

Included

## ANTI GLARE VISOR

Included

## CABLE LENGTHS

Additional distances possible with third-party HDMI extenders  
 Tested: Extron HDMI 201, 170 feet (52 meters)

## OVERALL DIMENSIONS

Width: 184 mm (7.25")  
 Depth: 148 mm (5.83")  
 Height: 156 mm (6.14")  
 Weight (with shroud): 1.4 kg (2.998 lbs)  
 Shipping Weight: 1.25 kg (2.75 lbs)

## ENVIRONMENTAL PARAMETERS

Operating Temperature: 0°C (32°F) to 40°C (104°F)  
 Operating Humidity: 15% to 85%, noncondensing  
 Storage Temperature: -20°C (-4°F) to 60°C (140°F)  
 Storage Humidity: 10% to 90%, noncondensing



## HEADQUARTERS

Austin, Texas, USA  
 +1 512 347 9300  
 Toll Free US +1 877 543 3749

## APAC REGIONAL OFFICE

Singapore  
 +65 6303 8370

## EMEA REGIONAL OFFICE

Munich, Germany  
 +49 89 20 70 76 0  
 Toll Free Europe +00 8000 999 09 799



www.lifesize.com  
 E-mail: info@lifesize.com

# lifesize®

©2015 Lifesize, a division of Logitech. All rights reserved. Information contained in this document is subject to change without notice. Lifesize is the registered trademark or trademark of Logitech. All other trademarks are the property of their respective owners.

DS\_LifesizeCamera10x\_EN\_0815