



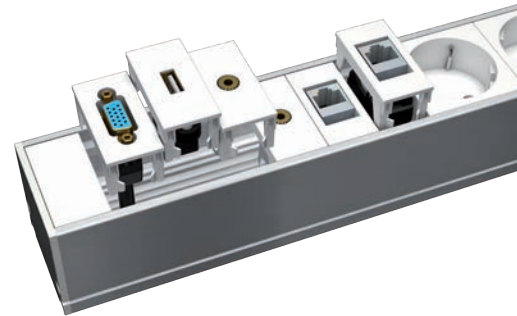
CablePort flex

High-value technology with modern Design

The CablePort flex is Kindermann's elegant cable management solution for mains, AV, data and network connections to meet higher demands.

The focus is on a high-value design and a comfortable operation. A slight touch on the lid, and it opens smoothly and nearly completely slides into the casing.

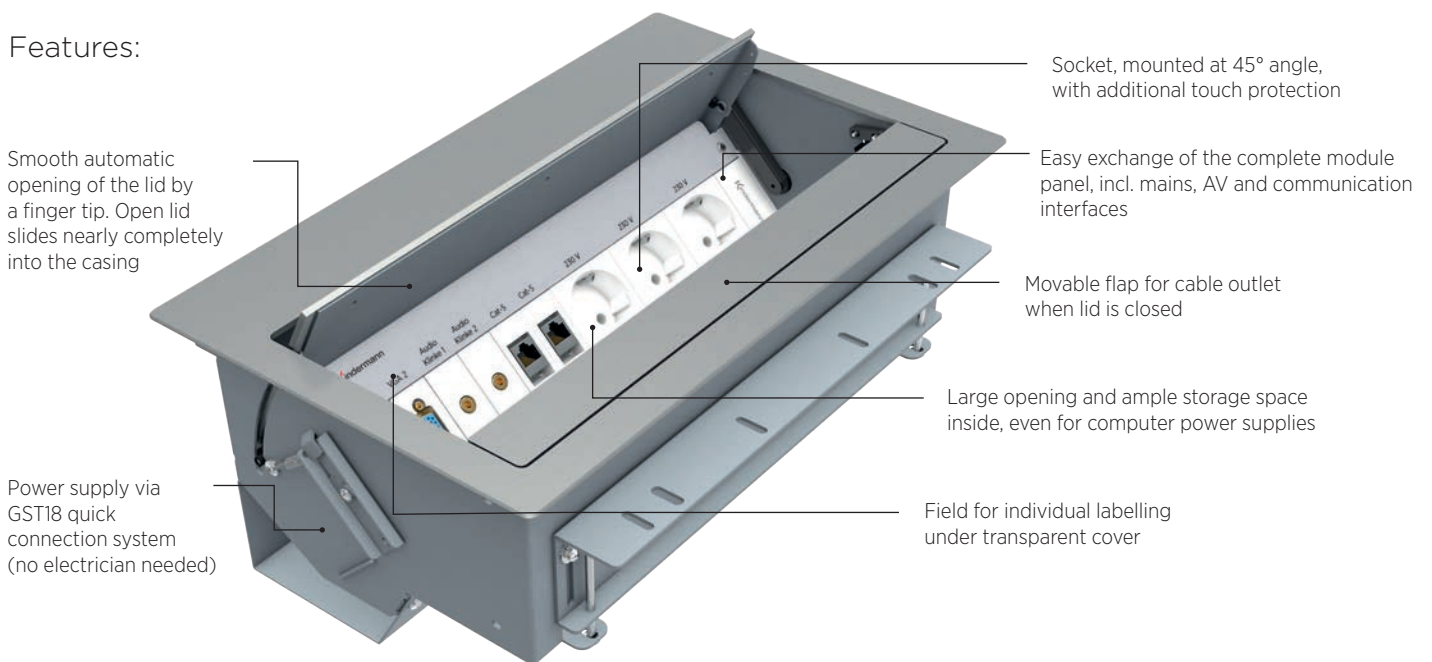
The sloping panel inside makes it easy to plug in; moreover there is enough space to harbour power supplies and cables.



It is self-evident that you can choose and arrange the interfaces according to your needs.

Quality
made
in
Germany
by Kindermann

Features:



Smooth automatic opening of the lid by a finger tip. Open lid slides nearly completely into the casing

Power supply via GST18 quick connection system (no electrician needed)

Socket, mounted at 45° angle, with additional touch protection

Easy exchange of the complete module panel, incl. mains, AV and communication interfaces

Movable flap for cable outlet when lid is closed

Large opening and ample storage space inside, even for computer power supplies

Field for individual labelling under transparent cover

Flex is not only the name of the product but also of the whole programme:

Beside a standard version with a lid of anodized aluminium it is possible to design the surface according to your wishes.

no matter if you prefer veneer, a glass plate or fine leather - nearly all wishes can be fulfilled.



Different ways of integrating CablePort flex

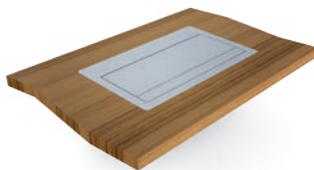
The CablePort flex is available in different versions:

- Installation without a frame and flush with desktop



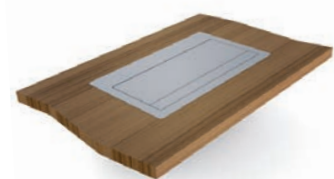
A very attractive design can be achieved by installing the basic module flush with the surface of the desk and without a mounting frame.

- With aluminium frame level with the surface



Ready-made tables need an additional aluminium frame and a precise cutout of the desktop to integrate the module level with the surface.

- On-surface aluminium frame with rim



The on-surface aluminium frame requires only a simple cutout which will be fully covered by its rim. The installation height is only 1.5 mm, which makes the built-in frame appear nearly flush with the surface.

Installation example: „aluminium frame flush with desktop“

2

Aluminium frame



Desktop



1

Basic module



3

Module holder for Konnect flex 45
fModule holder for mains, AV, network and telecommunication interfaces



CablePort flex – Basic module

1

For frameless installation in desktop

- With lid of anodized aluminium
- Inner parts powder-coated, silver, RAL 9006
- Installation depth: ca. 160 mm
- For desktops 15 - 40 mm thick

Empty casing for module holder 4-fold, cutout approx. 244 x 193 mm	7448 000 010
Empty casing for module holder 6-fold, cutout approx. 334 x 193 mm	7448 000 020



CablePort flex – Basic module for individual surfaces

1

For frameless installation in desktop

- Inner parts powder-coated, silver (RAL 9006)
- Installation depth: ca. 160 mm
- For desktops 15 - 40 mm thick

Empty casing for module holder 4-fold, cutout 244 x 193 mm	7448 000 030
Empty casing for module holder 6-fold, cutout 334 x 193 mm	7448 000 040
Carrier for individual surfaces, 4-fold e. g. for application of furnishings, d=max. 1 mm (Carrier is equipped by gluing on and then screwed to the flaps of the basic module)	7448 000 014
Carrier for individual surfaces, 6-fold e. g. for application of furnishings, d=max. 1 mm (Carrier is equipped by gluing on and then screwed to the flaps of the basic module)	7448 000 024



Examples:



Please note!

The individual surface must be provided and fitted by the manufacturer of the furniture, the joiner or the technician.

Aluminium frame

2

for Basic module 7448 000 010/020

	anodized aluminium frame with rim, to be mounted on the desktop	
	4-fold anodized aluminium, outer dimensions 271 x 220 mm	7448 000 011
	6-fold anodized aluminium, outer dimensions 361 x 220 mm	7448 000 021

	anodized aluminium frame, to be mounted level with the desktop	
	4-fold anodized aluminium, outer dimensions 271 x 220 mm	7448 000 012
	6-fold anodized aluminium, outer dimensions 361 x 220 mm	7448 000 022